
ENVIRONMENTAL STATEMENT 2025

of

BEFESA

Aluminium Germany GmbH

Claude-Breda-Strasse 6
06406 Bernburg (Saale)

Telephone: 03471 - 62879-0

Email: aluminiumgermany@befesa.com

ENVIRONMENTAL STATEMENT 2025

Table of Contents

Introduction

The environment and us

The company

Brief description of the company

Location of the site

Integrated management policy

An integrated perspective on the company's context

Classification of the production process

The integrated management system

Direct and indirect environmental aspects and their impacts

Core indicators

Other indicators

Input and output overview

Objectives and programmes

Declaration of validity

ENVIRONMENTAL STATEMENT 2025

Introduction

This updated environmental statement informs the public about the environmental and energy situation at Befesa Aluminium Germany GmbH, the measures already implemented in relation to environmental protection, environmental performance, sustainable management, and the improvement of energy efficiency, as well as the objectives intended to further reduce the environmental impact of our activities.

The environmental statement is prepared in accordance with the requirements of Annexe IV of EMAS.

The environmental statement is intended for the interested public and aims to provide information in a concise and understandable form.

If you have any suggestions or questions, please contact the site's general manager, Dr Georg Matthies:

Telephone: 03471 - 62879-0

Email: aluminiumgermany@befesa.com

ENVIRONMENTAL STATEMENT 2025

The environment and us

Befesa Aluminium Germany GmbH is fully committed to environmental protection and has set itself the goal of minimising or entirely eliminating the environmental impact of its business activities. We are also committed to using minimal environmentally impactful materials that are as sustainable as possible at the Bernburg site. This promotes ongoing development and ensures improved environmental performance. We are also applying this approach consistently to the plant expansion currently under construction. To this end, in 2024 we expanded our environmental management system, among other things, to meet EMAS regulation requirements, thereby demonstrating how fundamental environmentally responsible action is to us.

➤ RESPONSIBILITY

We take responsibility for all our products, services, and other business activities. We ensure the authenticity of our products as part of our legal obligations. We also recognise the importance of environmental protection, energy efficiency, and sustainable practices, and we set the highest standards in these areas. Technical innovation, plant safety, occupational health and safety, and quality are fundamental to our commercial success. By optimising our processes, we continually improve our business activities.

➤ OPENNESS

We foster open dialogue on environmental protection, energy efficiency, and sustainability, and aim to raise, strengthen, and promote environmental awareness among our employees, suppliers, and customers.

➤ EMPLOYEE INVOLVEMENT

We actively involve our employees and the works council in enhancing our company's environmental performance. Employee suggestions are evaluated in our management meetings. Notices are posted to highlight matters relating to operational environmental protection, energy efficiency, and sustainability. The responsible teams and all employees regularly attend training sessions on occupational health and safety, energy management, and environmental protection.

➤ COMMUNICATION

This environmental statement serves as an instrument of the company's active public relations work on environmental protection and accountability. The report will be published on the website, making it available to interested parties, public authorities, and clients.

ENVIRONMENTAL STATEMENT 2025

The company

Company name:	Befesa Aluminium Germany GmbH
Legal form:	Private limited company
NACE code (WZ 2008):	24.42 Aluminium production and initial processing
Headquartered in:	06406 Bernburg (Saale) Claude-Breda-Strasse 6 Telephone: 03471 - 62879-0 Email: aluminiumgermany@befesa.com
Start of production:	December 2014
Commercial register entry:	Stendal Local Court HRB 18773
Managing director:	Manuel Barrenechea del Arenal
General manager	Dr Georg Matthies Telephone: 03471 - 62879-0

ENVIRONMENTAL STATEMENT 2025

Brief description of the company

Since 1987, Befesa has provided solutions for environmentally sensitive residues from the steel and aluminium industries and currently operates 24 plants across eight countries in the USA, Asia, and Europe. Befesa has around 1,800 employees and, in 2025, processed approximately 1.9 million tonnes of waste. The company generated around 1.7 million tonnes of products that were returned to the economic cycle, conserving primary resources. These processes prevent the release of over 2 million tonnes of carbon dioxide equivalents (CO₂e) each year.

Befesa has been listed on the stock exchange since 2017 and was added to the MDAX in 2021 (BFSA.MDAX). In 2025, revenue amounted to €1.183 billion.

The Befesa Group, parent company of Befesa Aluminium Germany GmbH, aims to be a global leader in managing and recycling hazardous residues in the steel and aluminium industries by continuing to play an increasingly important role in a more sustainable world and in the circular economy.

Befesa provides sustainable solutions to the steel and aluminium industries by processing and recycling hazardous and environmentally significant residues from the value chains of secondary steel and aluminium producers, particularly crude steel dust, salt slag, and spent pot lining (SPL). Befesa has been part of the international circular economy for over three decades.

The Befesa Aluminium Salt Slags Recycling Services division is organised into three distinct but complementary areas:

1. Recycling of salt slag, spent pot lining (SPL) and refractory lining
2. Secondary processing of aluminium scrap, dross, and other aluminium-containing residues to produce customer-specific aluminium alloys
3. Sale of technology and special equipment

Befesa Aluminium Germany GmbH, with its sole site in Bernburg/Saale, is part of Group 2 within the Salt Slag Services division, functioning as a secondary aluminium smelter. On 7 March 2014, Befesa Aluminium Germany GmbH was granted the emission control permit under Section 4 of the Federal Immission Control Act (BImSchG) for the construction and operation of the plant in Bernburg (Saale). Operations began on 1 December 2014. The planned plant expansion is currently under construction. The goal is to double the installed capacity. The expanded part of the plant is scheduled to start operations in the second half of 2026.

As a secondary aluminium smelter, the company operates on a fully continuous shift basis, producing aluminium alloys in solid and liquid form for further processing in foundries according to customer specifications. The secondary smelter can currently produce up to 90,000 tonnes per year of aluminium alloys from up to 145,000 tonnes per year of aluminium-containing scrap, concentrates, chips, dross, and similar secondary materials. The facility stores a maximum of 6,000 tonnes of waste, including up to 2,500 tonnes of hazardous waste. Up to 1,000 tonnes of aluminium salt slag is also temporarily stored in the storage area as production waste for further recycling.

ENVIRONMENTAL STATEMENT 2025

Aluminium-containing input materials are melted down in modern tilting drum and flame furnaces equipped with energy-efficient burner systems, then refined to meet the required specifications. Befesa supplies its customers with aluminium alloys in both liquid form, transported by truck in specialised crucibles, and as solid ingots produced on an automated casting line.

Befesa Aluminium Germany reduces environmental impact not only through its own optimised production processes; the supply of liquid metal also provides an indirect environmental benefit for customers by lowering CO₂ emissions, as it eliminates the energy needed for remelting.

The plant equipment for the planned expansion also relies on proven processes combining tilting drum furnaces and casting furnaces, producing liquid metal and ingots. We meet the highest state-of-the-art standards, thereby establishing further benchmarks for high-quality, energy-efficient, and sustainable process management.

Location of the site

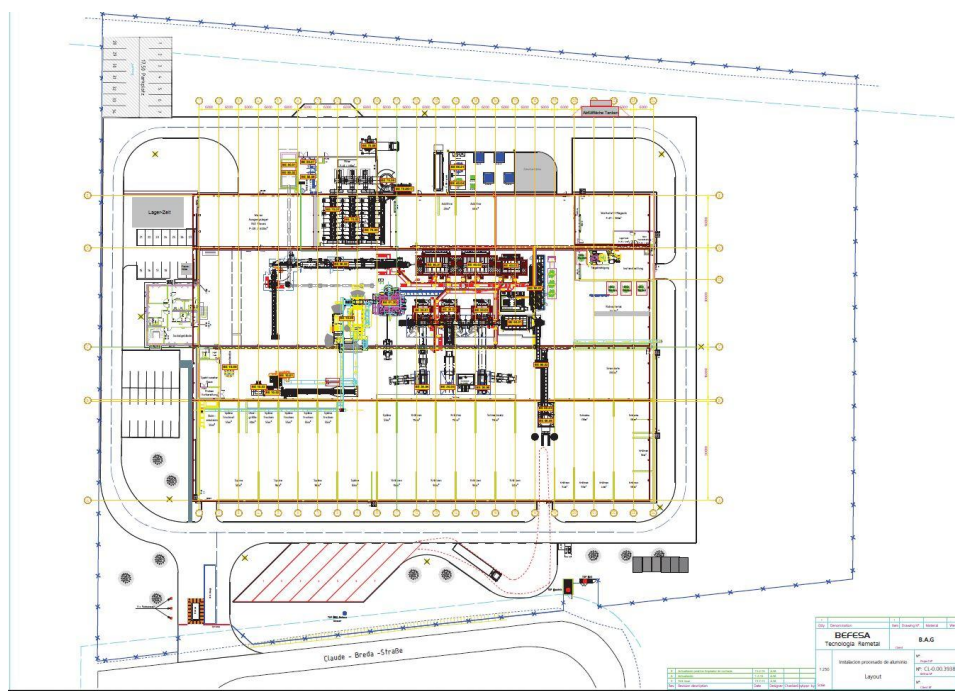
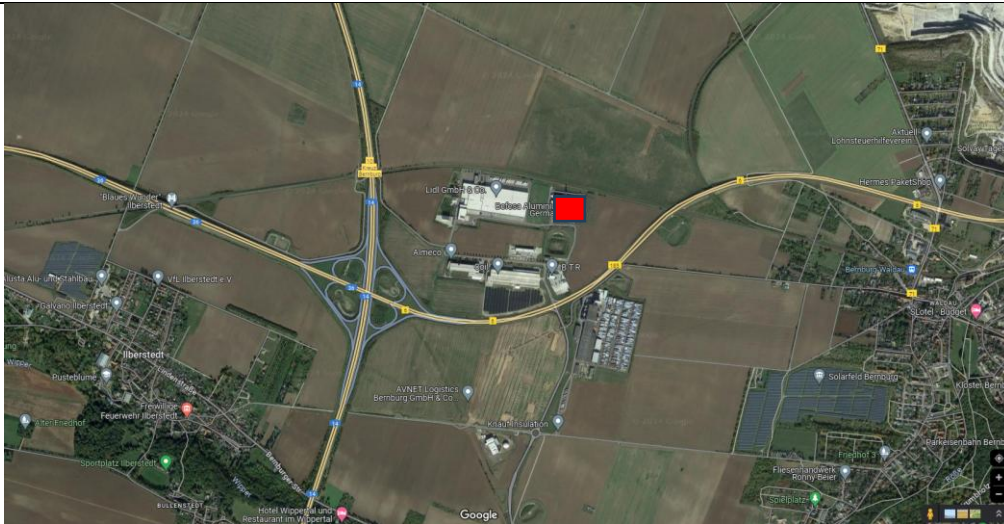
The plant is situated in the Bernburg-West industrial estate in the Salzland district of Saxony-Anhalt. The A14 motorway runs approximately 500 metres west of the plant site. The A36/B6n motorway lies to the south of the industrial estate. There are other commercial enterprises directly adjacent to the plant site, including a warehouse operated by Lidl GmbH & Co. KG, a site operated by the Almecco Group, and a flat rolling mill operated by Coil GmbH.

The nearest residential areas are about 1,100 metres west in Ilberstedt and roughly 1,400 metres east in Bernburg.

Leipzig/Halle International Airport is located about 70 kilometres south-east of Bernburg, near the Schkeuditzer Kreuz junction (approximately a 45-minute drive).



ENVIRONMENTAL STATEMENT 2025



ENVIRONMENTAL STATEMENT 2025

Integrated policy for occupational health and safety, quality, environmental and energy management

Policy

We are dedicated to the continuous improvement of our products and processes, the enhancement of our occupational health and safety, environmental and energy management systems, and the continuous advancement of our energy and environmental performance. We achieve this, among other efforts, through measurable results in tracking environmental aspects and implementing targeted measures. Befesa Aluminium Germany GmbH aims to strengthen its position as the industry leader in the secondary aluminium sector and to be a pioneer in sustainable development in the wider context. We are convinced that combining occupational health and safety, quality, environmental management, and energy management is the only way to achieve production at the highest level and sustainable success, with maximum safety and quality as well as the best possible environmental and energy performance. Our management policy is established in line with our corporate principles, the relevant legal framework and the requirements of our stakeholders. We have defined the context of our organisation, as well as the interested parties and binding obligations, and have analysed the resulting internal and external issues. Our corporate policy supports the objectives and initiatives arising from this. It also includes complying with external standards and the requirements of interested external stakeholders as well as fulfilling binding obligations. The following

Principles

apply:

- Senior management and all managers lead by example.
- We aim for ZERO accidents.
- We believe that all accidents, personal injuries, and property damage can be prevented and that all measures must aim to achieve this. We record and investigate all accidents to achieve sustainable improvements for all our direct and indirect employees.
- We never prioritise production or economic gain over the health and safety of our employees and contractors.
- The health and safety of our employees, subcontractors, and third parties, as well as environmental protection, are our top priorities and the most important aspects of our daily work.
- We enforce a constructive zero-tolerance approach whenever deviations occur.
- We firmly believe that active participation by everyone is the foundation of our success, and we encourage dialogue and the active, ongoing involvement of all company members and service providers. The company actively promotes, requires, organises, and supports appropriate training and further education opportunities.

ENVIRONMENTAL STATEMENT 2025

- Through systematic and planned actions, we establish a programme for training, research, and the prevention of defects and incidents, and we evaluate the effectiveness of the measures implemented.
- We support the procurement of energy-efficient products, processes, and services that have an impact on our environmental and/or energy-related performance. We also promote design activities that take account of improvements in environmental and/or energy-related performance.
- We use the best available technologies and appropriate resources to comply with legal and regulatory requirements for occupational health and safety and environmental protection. Furthermore, we are committed to conserving resources, using energy efficiently, enhancing our environmental and energy performance, and meeting specific customer requirements.
- We apply the principle of continuous improvement to our manufacturing and management processes to ensure we produce high-quality products using reliable procedures. This approach enhances our expertise, maintains effective control, and minimises environmental impacts and hazards.
- We are committed to establishing annual, measurable targets for quality, health and safety, energy, and the environment. These targets are regularly reviewed, evaluated and published by the general manager.
- We develop, review, and maintain an integrated management system for occupational health and safety, the environment, quality and energy, in line with recognised international standards. We make available the necessary human and financial resources along with the information required to maintain the integrated management system.
- We are committed to regularly evaluating the integrated management system to ensure its suitability for the organisation.
- We are committed to complying with all binding obligations and applicable legal standards.

This policy is published and accessible to all.

ENVIRONMENTAL STATEMENT 2025

An integrated view of the company's context

Befesa Aluminium Germany GmbH operates within social, legal, economic, and sustainable frameworks that significantly shape our mission and vision. These factors also guide the design, development, and implementation of our integrated management system to fulfil our strategic plan in line with group guidelines. Regularly identifying and reviewing relevant topics and objectives that affect our success and integrated management system, along with understanding their impact on outcomes, is essential to fulfilling this complex task. This is particularly relevant to the evaluation and ongoing improvement of environmental and energy performance.

We have identified the interested parties and determined their expectations and requirements. We have identified and taken into account all potentially resulting binding obligations.

We review and update any changes to the context, internal and external issues, and binding obligations as they arise or at least once a year. We monitor environmental and energy performance annually and assess ongoing improvement.

Classification of the production process

Befesa Aluminium Germany GmbH is a secondary aluminium smelter, classified under Nos. 3.4.1 and 3.8.1 of Annexe 1 to the 4th BImSchV.

The plant is currently authorised for:

- A melting capacity of up to 372 tonnes per day (maximum 90,000 tonnes per year),
- Materials preparation, with a throughput capacity of 120 tonnes of input materials per day,
- A foundry, including liquid loading, with a processing capacity of up to 372 tonnes per day, and
- Storage facilities for the temporary storage of hazardous and non-hazardous waste:
- Operating Unit BE 01.10.08: total storage capacity of 6,000 tonnes of waste,
 - o including up to 2,500 tonnes of hazardous waste,
 - including up to 200 tonnes of hazardous waste classified as ASN 10 03 15*,
 - in BE 01.60.05: 1,000 tonnes of aluminium salt slag (ASN 10 03 08*),
 - o with up to 100 tonnes of aluminium salt slag (ASN 10 03 08* as raw material)
- Except for BE 01.60.01 to BE 01.60.04: these units handle slag cooling and include two storage silos with a total capacity of 400 tonnes of aluminium salt slag

on the property in 06406 Bernburg (Saale), Bernburg district, parcel 73; former parcels: 273, 274, 275, 276, 1013; after conveyance: 1018, 1019, 1020, 1021, and 1022.

ENVIRONMENTAL STATEMENT 2025

Significant official authorisations required to operate the plant:

- Federal Immission Control Act (BImSchG)
- A building permit in accordance with Section 71 of the Saxony-Anhalt Building Code (BauO LSA)
- An indirect discharge licence in accordance with Section 58 of the Federal Water Act (WHG)
- Authorisation for work on Sundays and public holidays in accordance with Section 13 (5) of the Working Hours Act (ArbZG)

Our secondary smelter can currently produce up to 90,000 tonnes per year of aluminium alloys from up to 145,000 tonnes per year of aluminium-containing scrap, concentrates, chips, dross, and similar secondary materials; these alloys are delivered to our customers in liquid and solid form.

To melt moist chips, they are first pre-classified using a sieve drum, then passed through magnetic separators to remove any ferrous components. The pre-treated chips are then transferred to a chip dryer, where water is vaporised, and the oil components are pyrolytically treated. The chips are dried using hot combustion gases rather than a direct flame. The system's exhaust air is channelled through an afterburner before being fed into the exhaust airflow.

Each of these pre-treatment processes, functioning as ancillary equipment to the smelting plant, requires a separate licence due to its classification under No. 8.11.2.2 in Annexe 1 of the 4th BImSchV, based on daily throughput capacity.

In accordance with Section 1 (4) of the 4th BImSchV, the entire plant requires only a single permit, which was granted through a formal procedure on 7 March 2014.

The aluminium smelting plant is listed under the Industrial Emissions Directive. Hazardous substances, as defined in Article 3 of Regulation 1272/2008 (CLP Regulation), are handled at the plant covered by the application. Our company is subject to the European Industrial Emissions Directive and is therefore required to comply with the state of the art as defined in the BAT conclusions.

The hazardous substances used, as defined by the CLP Regulation and the Hazardous Substances Ordinance - such as various melting salts, diesel fuel, lubricating and hydraulic oil, and calcium oxide - are classified in water hazard classes (WGK) 1 and 2, meaning they are slightly hazardous or hazardous to water.

Although these substances are classified as hazardous under the CLP Regulation, they pose no risk of groundwater contamination due to their quantities and classification in hazard levels A and B under the AwSV.

As part of the expansion, Befesa plans to construct a new production line in a separate new building covering approximately 10,000 m². This will increase the plant's capacity, allowing for additional raw material input of up to 140,000 t/a (aluminium-containing scrap, concentrates, dross, and similar secondary raw materials) to produce up to an additional 90,000 t/a of aluminium alloys. The application for a significant modification to a plant requiring approval under Section 16 of the BImSchG was submitted on 8 October 2024 and is currently being processed. Construction began in August 2025 in accordance with the permit, and commissioning is planned from July 2026.

ENVIRONMENTAL STATEMENT 2025

The integrated management system

Befesa Aluminium Germany GmbH's integrated management system, certified to DIN EN ISO 14001 and EMAS for environmental protection, DIN EN ISO 50001 for energy, DIN EN ISO 9001 for quality and DIN EN ISO 45001 for occupational health and safety, establishes procedures across all areas of the company. This system promotes a consistent approach to environmental, energy, health, safety, and quality standards in all relevant activities.

Annual group certification according to DIN EN ISO 14064-1:2019 is also conducted together with the smelting plants in Spain. For 2025, this gives a value of approximately 0.84 t CO_{2e} per tonne of aluminium produced (Scopes 1-3, direct and indirect emissions). This makes Befesa one of the leading suppliers in its field.

In addition, Befesa Aluminium Germany GmbH has been certified under TISAX® Assessment Scope SZKZNG since 12 June 2024, and since 11 December 2025 the company has also been certified under the ASI Performance Standard.

The continual implementation and enhancement of our integrated management system drive ongoing improvements in environmental protection, energy efficiency, quality, working conditions, and sustainability. We meet all customer requirements, legal regulations, standards, and internal guidelines to protect our employees, minimise environmental impact continuously, operate sustainably and energy-efficiently, and build lasting partnerships with our customers.

A well-structured approach to environmental protection and energy management within the company is essential for sustainably achieving our environmental and energy goals.

The management system encompasses all areas of responsibility within Befesa Aluminium Germany GmbH.

The following individuals are responsible for environmental protection in our company:

- The managing directors are responsible for the environmental, energy, occupational health and safety, and quality policy, for creating the conditions for its implementation, and for involving employees.
- The entire management team is responsible for implementing and maintaining the environmental and energy management system within their respective divisions.
- The executive management is responsible for proper operation and for corrective actions in the event of deviations.
- The energy and environmental management officer is responsible for implementing measures to enhance environmental performance and increase energy efficiency within the company. They lead an environmental and energy team, which includes management and the heads of production, maintenance, sales, purchasing, human resources, and controlling.
- The environmental and energy team meets at least once per quarter. The meeting results are recorded in a central to-do list to monitor the progress of measures through to the effectiveness check.

ENVIRONMENTAL STATEMENT 2025

The company has appointed legal representatives for immission control, waste management, hazardous materials, fire protection, data protection, a company doctor, an occupational safety specialist, and a responsible electrician. The representatives document their activities in annual reports.

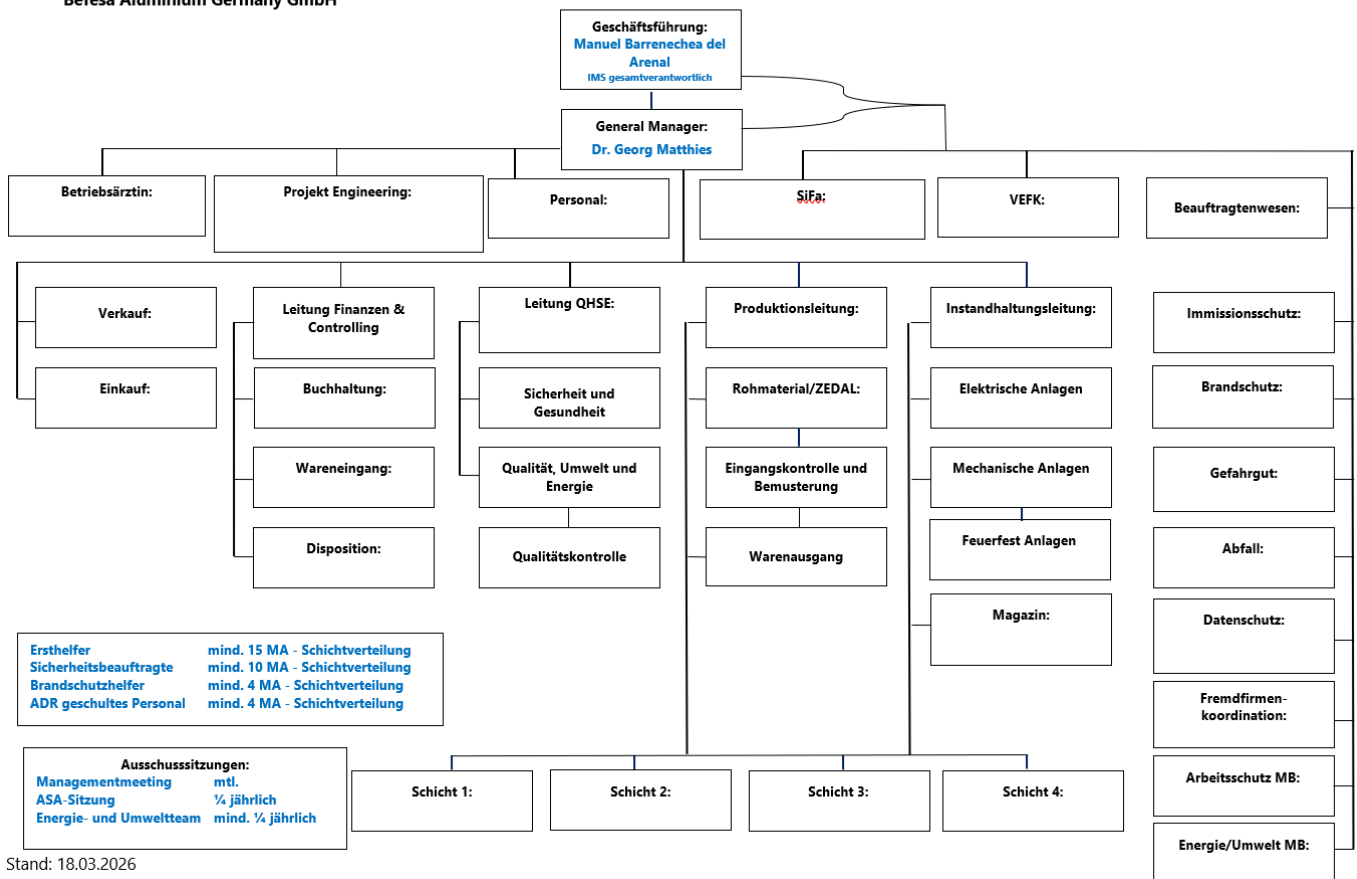
The internal company officers required by law or by the authorities are professionally qualified and report directly to management. They are authorised and required to provide input on investment decisions related to new processes and products and must be consulted before planning operational facilities, work processes, and the introduction of materials. They are also authorised to access and inspect all business premises within their area of responsibility. They act independently, without external direction, when applying their expertise.

The external representatives communicate directly with site management, the managing director, and the QHSE department.



Befesa Aluminium Germany GmbH

Organigramm



Stand: 18.03.2026

ENVIRONMENTAL STATEMENT 2025

Direct and indirect environmental aspects and their impacts

We have identified and quantified the direct and indirect environmental aspects based on available permits, legal regulations, potential accident hazards, risks to the environment and personal safety, impacts on the surrounding community, resource consumption, sustainability, internal process guidelines, and our monitoring and measurement data. We use this information to identify significant environmental impacts and define appropriate measures. We have mainly derived indicators that enable year-on-year comparisons, providing a sound basis for continuous improvement in our environmental and energy performance.

Over 95% of our input materials originate from recycling processes. We are a key part of the circular economy.

Direct environmental impacts

Direct environmental impacts are assessed by calculating a risk indicator using a matrix that combines severity and probability of occurrence with additional factors such as legal provisions, permit conditions, and experience gained from incidents, thereby enabling targeted mitigation measures to be initiated.

Environmental influence	Substance	Origin	Environmental impact	Relevance
direct	Salt slag	process-related	Hazardous waste	high
direct	Filter dust	process-related	Hazardous waste	high
direct	Combustion products	process-related	Emissions/waste heat	high

Tab. 1: List of relevant direct environmental aspects and their impacts

The environmental impacts are reassessed annually by the environmental and energy team, or whenever there are significant changes or events, legislative changes, or changes in the company's context. To assess significant environmental aspects, we use defined criteria such as relevance to permitting, incidents, and other factors.

Indirect environmental impacts

Befesa Aluminium Germany GmbH aims to strengthen its position as the industry leader in the secondary aluminium sector and to be a pioneer in sustainable development in the wider context. This also involves positively influencing indirect environmental impacts wherever possible. Assessing indirect impacts is also done in stages: first, the potential for influence and the need for alternatives are examined, followed by determining the severity of their impact. Mitigation measures can also be developed from this.

We consider indirect impacts from energy production, transport by suppliers, and the production and transport of spare parts and services used by Befesa or arising during the further processing of Befesa products. These are audited and certified annually in compliance with ISO 14064.

ENVIRONMENTAL STATEMENT 2025

It should be noted that the production and supply of liquid metal have a higher direct impact, mainly due to the energy required for overheating the metal. However, this is more than offset by customer savings from eliminating the need for remelting. This saves approximately 440 kWh of energy per tonne of liquid metal supplied. This results in environmental savings of 16.9 GWh per year in 2025 alone. This corresponds to 3,372 tonnes of CO₂ equivalents.

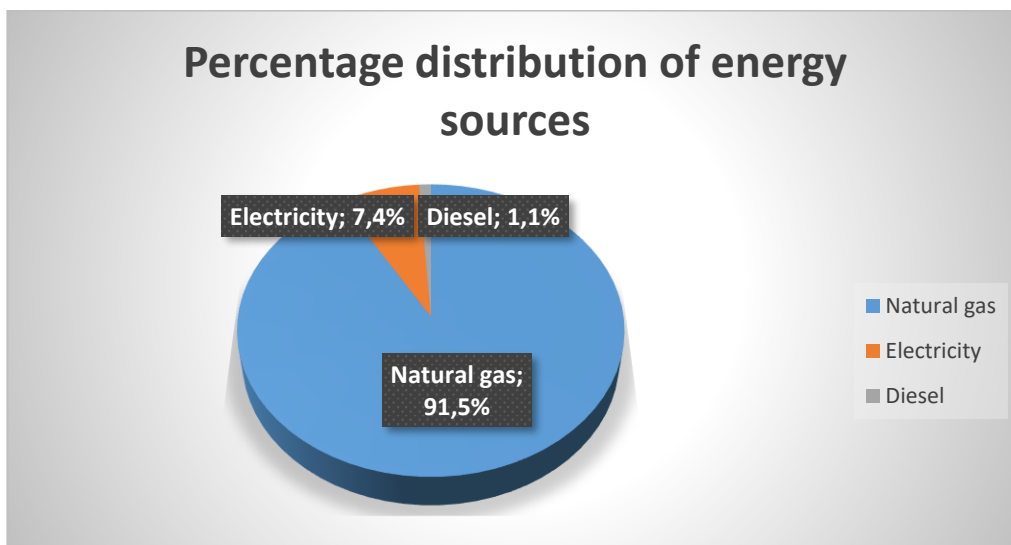
In addition, priority is given to regional suppliers, including when procuring raw materials and selecting other suppliers and service providers.

Befesa remains committed to reducing its environmental impact through small-scale initiatives. For example, Befesa offers employees the option to lease e-bikes to help reduce emissions from commuting. This option has been well received. Charging facilities for e-bikes have been installed, and electric car charging facilities were also installed to the required professional standard in spring 2025.

Core indicators

Energy efficiency

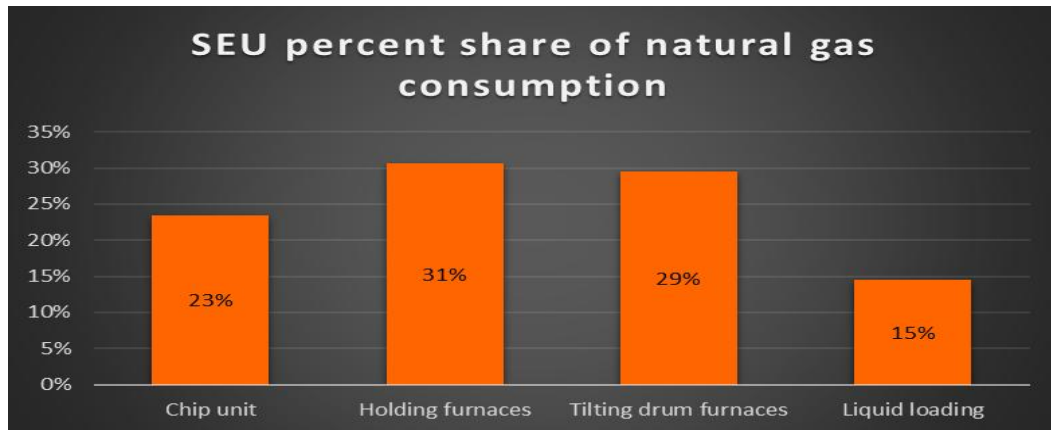
The company uses natural gas, electricity, and diesel fuel as energy sources. Total energy consumption in 2025 was 81,091,537 kWh. No energy is generated, recovered, or transferred within the company, so total energy consumption equals total final energy consumption:



ENVIRONMENTAL STATEMENT 2025

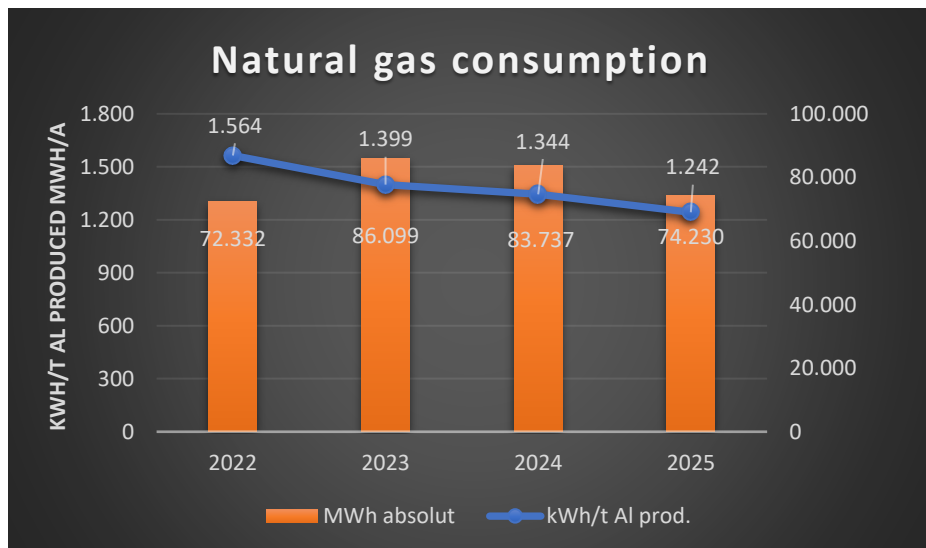
Natural gas

Natural gas is the primary energy source for our production. Natural gas is primarily used for operating burner technology, especially in melting and casting furnaces. The significant energy users (SEUs) are the following furnaces:



The chip unit includes preparation, drying, and a melting furnace. Additionally, three holding furnaces and three tilting drum furnaces are in operation. The aforementioned four SEUs account for 98% of total natural gas consumption.

The following graph shows the absolute and specific natural gas consumption. The measures implemented are effective and are being continuously refined, resulting in a further reduction in the specific indicator. This goal will be pursued further.

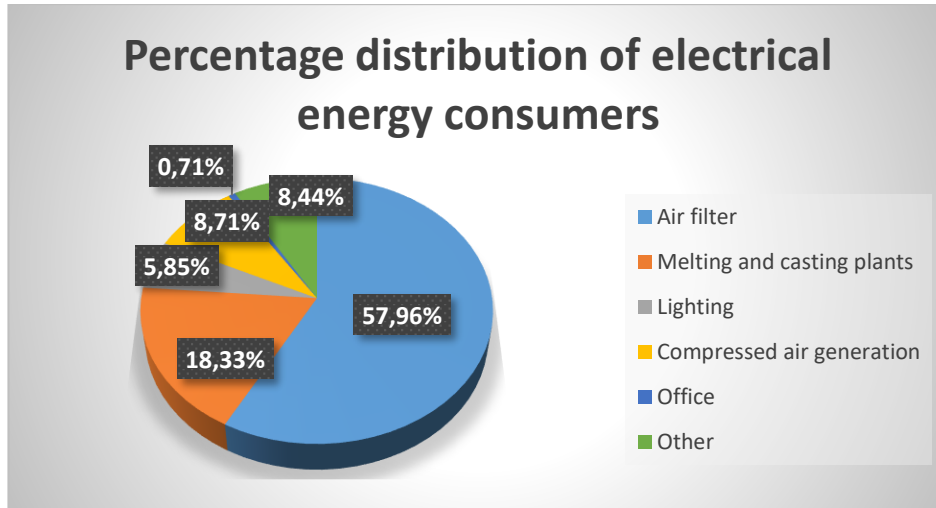


The drop in the absolute value in 2022 was due to production adjustments (operating in three shifts instead of four), as the plant's capacity could not be fully utilised because of a service provider's failure in the subsequent process chain.

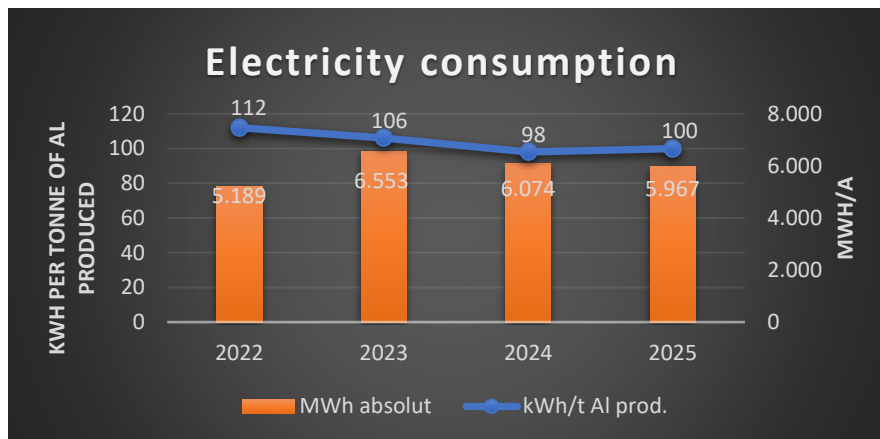
ENVIRONMENTAL STATEMENT 2025

Electrical energy

Electricity is sourced from the local grid. Approximately 57% of the electrical energy is sourced from renewable energy.



Electricity is primarily used for operating machine technology, especially the exhaust air filter system. A small percentage of total consumption is used for lighting and operating IT systems in administration and production.



An analysis of the specific consumption values shows that consumption levels have remained almost unchanged. Due to the commissioning of an additional cooling drum in August 2025, specific consumption in 2025 rose slightly compared with the previous year. Nevertheless, ongoing improvement is evident. The additional cooling drum increases the cooling capacity for the slag produced in the tilting drum furnaces, thereby allowing furnace operating times to be made more flexible and minimising fugitive dust emissions.

ENVIRONMENTAL STATEMENT 2025

Diesel fuel - fuel consumption in production and company cars

The vehicle fleet in 2025 will include:

- 4 Volvo L90 wheel loaders
- 1 Volvo L45 wheel loader
- 1 CAT M314 excavator
- 4 Linde forklift trucks
- 4 different cars

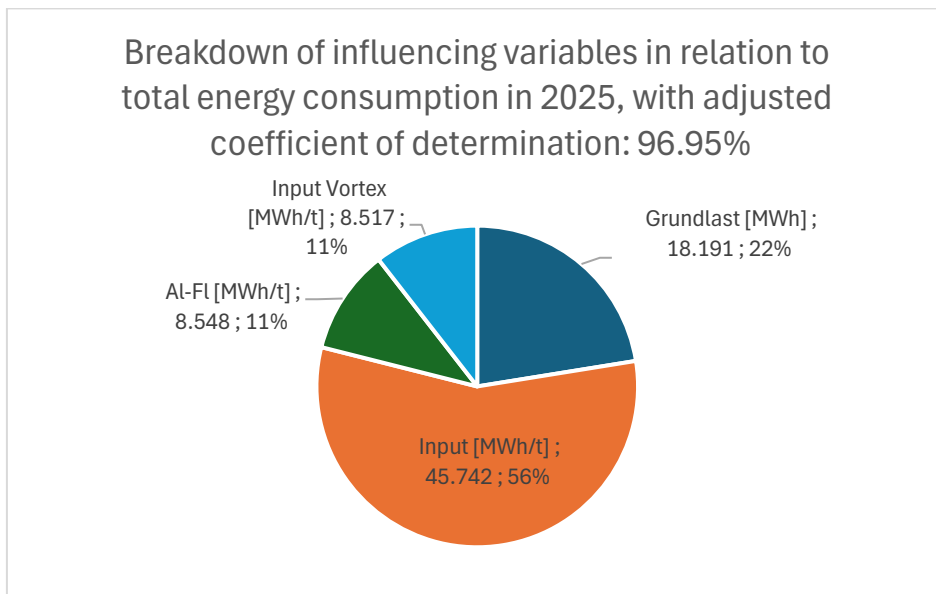
Diesel	Consumption [l]	CO ₂ equi [kg/t Al _{input}]
2022	79,365	2.99
2023	105,281	2.93
2024	95,851	2.68
2025	90,108	2.64

The selection of vehicles and engines is based not only on requirements and needs but also on advancements in engine technology. This means that only modern, low-emission, and energy-efficient engines are used in the vehicles, as reflected in the development of the specific key figure. Furthermore, in 2025, three of the four company cars were converted to hybrid models, resulting in a reduction in diesel consumption. The use of electric forklifts for the plant expansion is currently being examined.

Influencing variables

Static and variable factors are analysed, and their respective influences are evaluated. Multiple linear regression analysis is also applied to determine energy efficiency in relation to the key indicators.

In addition to total input, the main influencing variables identified are base load, input into the chip unit, and the proportion of liquid metal deliveries. This gives a coefficient of determination of 96.95%. The aim is to refine the influencing variables further using specific tools, enabling the introduction of more effective measures to improve efficiency.



ENVIRONMENTAL STATEMENT 2025

Share of renewable energy

In 2025, 57% of electrical energy came from renewable sources. The provider's invoice details serve as evidence. Further long-term options for sourcing energy from renewable sources are also in discussion.

No energy has been generated from renewable sources on site to date. Options are being explored.

Material efficiency

The material efficiency is determined by the total input divided by the total output of the system. Aligned with the parent company's vision, Befesa Aluminium Germany GmbH processes aluminium-containing scrap of nearly any quality. The circular economy concept, the conservation of primary resources, the avoidance of waste, and the use of state-of-the-art technology for recovering aluminium are central guiding principles of the organisation.

Year	2021	2022	2023	2024	2025
Metal yield [%]	65.4	66.1	64.2	65.61	66.04

The input materials are thoroughly analysed in advance, compiled and graded with supporting software to ensure the best possible combination of material and energy efficiency, as well as equipment utilisation and productivity in production.

ENVIRONMENTAL STATEMENT 2025

Water

In addition to sanitary wastewater, operating the secondary aluminium smelter also generates wastewater from the cooling system of the aluminium recovery plants, which is discharged into the public wastewater system of the water utility association (WZV) "Saale-Fuhne-Ziethen". The discharge is undifferentiated, as the sanitary wastewater component is minimal. Under Section 58 of the WHG, discharging wastewater into public wastewater systems (indirect discharge) requires authorisation. According to Section 13 of the BImSchG, indirect discharges are included in the authorisation outlined in Section 4 of the same Act.

The total water consumption was as follows:

Water	2023	2024	2025
Fresh water [m ³ /t Al produced]	0.411	0.598	0.558
Fresh water [m ³ absolute]	25,264	37,217	33,363
Wastewater [m ³ /t Al produced]	0.230	0.469	0.365
Wastewater [m ³ absolute]	14,176	29,237	21,819

The additional quantities in 2024 are due to a process-related increase in the blowdown flow rate from 4 m³/h to 7.5 m³/h. This leads to a theoretically calculated additional consumption of 12,600 m³ per year. Measures are currently being developed to permanently reduce water consumption. By temporarily reducing the flow velocity of the blowdown in 2025, it was possible to demonstrate that fresh water consumption and the volume of wastewater could be reduced.

The limit values under the 42nd BImSchV and the requirements of the permit for indirect discharge into the public wastewater system are being complied with.

The commissioned sampling and analyses of the blowdown water are carried out quarterly by approved bodies. No reportable violations of limits have occurred.

The inspection by an approved expert under the 42nd BImSchV was carried out on time on 18 August 2021. The next expert inspection is scheduled for August 2026.

ENVIRONMENTAL STATEMENT 2025

Waste

Waste is generated at the Befesa Aluminium Germany GmbH site during the production process. The type, quantity, and origin of waste are recorded in the waste register and updated by the waste management officer. Process-related waste, such as salt slag and filter dust, accounts for the largest proportion by volume. Indirect waste and municipal waste are also generated.

The secondary aluminium smelter uses aluminium-containing scrap, concentrates, chips, dross, and similar secondary materials as inputs for producing aluminium alloys. Most of the input materials mentioned are industrial waste utilised in the smelting plant. Waste is assigned waste codes according to the AVV. The treatment of waste is subject to the requirements of the Circular Economy Act (KrWG), which regulates the proper and harmless disposal of waste in Section 7 of the same Act. The proper disposal of the permitted waste at the smelting plant has been demonstrated.

Pursuant to Sections 49(1) and (2) KrWG, in conjunction with Section 51(1) KrWG, we are subject to verification and register obligations, which we fulfil in accordance with Sections 24 and 25 of the Ordinance on Waste Recovery and Disposal Records (NachwV).

In accordance with Section 5(1)(3) of the BImSchG, our plant operates to:

- avoid waste,
- utilise waste that cannot be avoided, and
- dispose of waste that cannot be recycled without adversely affecting the welfare of the general public.

The requirements of the KrWG are met.

We use representative sampling and analyses to accurately determine the pollutant content of the waste for its intended recycling and disposal routes. This fulfils the requirements of Section 7 Bas. 3 and Section 15(2) of the KrWG, and meets the requirements of Regulation (EU) No. 850/2004 (EU POP Regulation) on persistent organic pollutants, as last amended by Regulation (EU) No. 718/2025.

We comply with our operator obligations under Section 5(1)(3) of the BImSchG by implementing regulated operating procedures, an appropriate operational organisation, and internal regulations. Waste management activities are monitored and traceable at all times.

The routine plant inspection under the IED Directive by representatives from several supervisory authorities of Saxony-Anhalt and the Salzland district took place on 06 May 2025, resulting in "no defects". An official waste inspection of the plant was carried out on 28 January 2026, with no issues identified.

ENVIRONMENTAL STATEMENT 2025

Waste register: Waste generation at Befesa Aluminium Germany GmbH Bernburg 2024/2025

Waste code	Waste description	Quantity 2024 [t]	Quantity 2025 [t]	t / t input 2024	t / t input 2025
Process-related waste:					
10 03 08*	Salt slag from the secondary smelting process	39,550	38,083	0.417	0.421
10 03 19*	Filter dust containing hazardous substances	2,499	2,521	0.026	0.028
19 12 02	Ferrous metals	399	223	0.004	0.002
19 02 07*	Oils and concentrates from separation processes	41	11	0.0004	0.0001
Indirect waste:				Kg/t input	Kg/t input
15 01 03	Wooden packaging	18.03	58	0.190	0.641
15 01 10*	Packaging containing residues of hazardous substances or contaminated by hazardous substances	0.12	0.32	0.001	0.004
15 02 02*	Absorbent and filter materials (including oil filters not otherwise specified), wiping cloths and protective clothing contaminated with hazardous substances	4.57	3.48	0.048	0.038
16 11 04	Other linings and refractory materials from metallurgical processes, excluding those specified in 16 11 03	74.84	100	0.788	1.105
17 01 01	Concrete	0	69.58	0	0.769
17 04 11	Cables with the exception of 17 04 10	0	2.77	0.000	0.031
17 09 04	Construction and demolition waste	28.05	26.19	0.295	0.289
20 01 21	Fluorescent tubes and other mercury-containing waste	0	0.1	0	0.001
Municipal waste:					
20 03 01	Mixed municipal waste	2	15.25	0.021	0.169
Totals:		43,477.77	41,113.69		

100% of the salt slag produced is processed without leaving any residues. The resulting products are returned to the economic cycle. 82.6% of the filter dust is utilised and 17.4% is landfilled. The aim is to further increase the recycling rate, which still faces logistical challenges.

The increased volume of waste packaging made of wood and refractory materials from metallurgical processes (excluding those classified under 16 11 03) is due to increased maintenance requirements and the cyclical replacement of linings in melting and casting furnaces. In addition, the plant expansion includes an additional cooling drum, resulting in additional waste wood, such as pallets, cables (except for 17 04 10), and concrete. In addition, old light bulbs were routinely replaced in 2025, generating fluorescent tubes and other mercury-containing waste.

Other waste is collected, recorded, recycled, and disposed of separately within the company. Wherever possible, the KrWG philosophy is applied consistently. Corresponding certificates from the respective certified and/or authorised waste management companies are available. The requirements of the Commercial Waste Ordinance are complied with.

ENVIRONMENTAL STATEMENT 2025

The increase in packaging containing residues of hazardous substances or contaminated by hazardous substances (15 02 02*) is due to the installation of the additional cooling drum and to waste generated as part of the plant expansion from Q4 2025 onwards.

More than 97% of the waste generated is recycled and reused in accordance with the KrWG, thereby indirectly conserving further primary resources.

Emissions

Exhaust gases generated during the production process are treated in purification facilities to ensure emissions never exceed the limit values specified in the operating licence.

In 2025, responsible supervisory officials from the State Administration Office and other supervisory authorities conducted both announced and unannounced visits. No objections were raised.

The emissions listed below are calculated using the emission factors and separation efficiencies recognised for reporting under the 11th BImSchV.

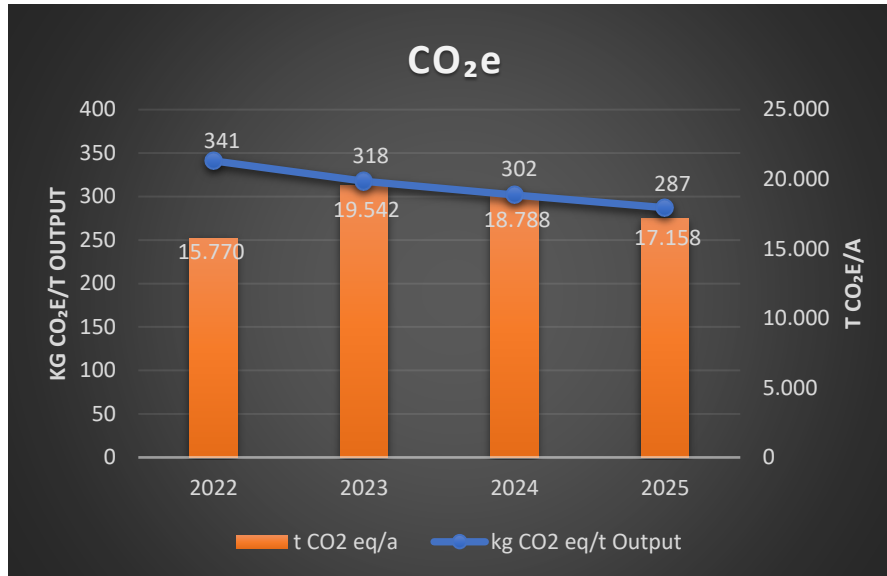
Other climate-relevant gases, such as sulphur hexafluoride (SF₆), hydrofluorocarbons (HFCs), PFCs, NMVOCs, NF₃, are not generated at the site.

Emissions			
Production volume [t/a]	61,531	62,286	59,748
	2023	2024	2025
	kg/a	kg/a	kg/a
SO ₂	946.01	957.62	918.60
HF	8.684	8.790	8.432
HCL	17.588	17.803	17.078
NH ₃	184.59	186.86	179.24
CO	4,170.49	4,221.65	4,049.63
CO ₂	15,130,136.90	15,315,738.74	14,691,660.37
N ₂ O	479.43	485.31	465.53
Hg	0.26	0.27	0.26
CH ₄	3,691.87	3,737.16	3,584.88
NO ₂	34,741.06	35,167.22	33,734.25
Organic gases excluding CH ₄	25,085.09	25,392.81	24,358.12
V	0.00760	0.00769	0.00738
Cr	0.00760	0.00769	0.00738
Ni	0.0266	0.0269	0.0258
Cu	0.0131	0.0132	0.0127
Zn	0.191	0.193	0.185
Cd	0.00214	0.00216	0.00207
Pb	0.0505	0.0511	0.0490
Dioxins	0.0000117	0.0000118	0.0000114
Dust	60.079	60.816	58.338

All loads are below the threshold values for PRTR reporting.

ENVIRONMENTAL STATEMENT 2025

The site-related CO₂ equivalents (Scope 1+2) show the following trend: Continuous improvement was achieved in 2025 in both the overall value (orange) and the specific value (blue).



Calculated using the emission factors from the EEW information sheet on CO₂ factors 2024

For the purposes of recording managed waste heat sources in accordance with the EnEfG as at 31 March 2026, the calculation of waste heat potential was carried out as part of the reporting obligation under Section 17 EnEfG and entered in the waste heat portal by the deadline.

The following waste heat potentials were identified:

- Exhaust air stack
 - Continuous
 - Potential available
 - 2026: project preparation for potential energy use (district heating network)
- Slag cooling
 - Discontinuous
 - Difficult to utilise
- Casting line cooling tower
 - Discontinuous
 - Difficult to utilise

Biodiversity

The property currently used by Befesa Aluminium GmbH is located in the Bernburg West industrial estate.

Site area: 40,000 m²,

Sealed area: 23,400 m²

Near-natural area: 16,600 m².

Site coverage ratio (sealed area/total area) = 0.58

ENVIRONMENTAL STATEMENT 2025

According to the development plan, a site coverage ratio of 0.80 is permitted. Where necessary work in the outdoor area permits, a reduction in the site coverage ratio will be pursued. Since 2018, Befesa Aluminium GmbH has owned an additional 36,000 m² to the east, previously used for agricultural purposes. Work is currently under way on the plant expansion, which is being built on previously unused areas. Where possible, the planning takes account of the retention of near-natural areas, and voluntary compensatory measures are included. Corresponding compensatory areas were created by the town of Bernburg when the area was designated. The sealing work began in January 2026.

Other indicators

Best available techniques

For installations covered by the Industrial Emissions Directive of 25 July 2024, the conclusions of the BAT reference documents apply where available. A BAT reference document is also available for the best available techniques in secondary aluminium smelting within the non-ferrous metals industry. The conclusions of the BAT reference documents were published on 29 November 2024. Following review, no action is required.

Noise

The development plan specifies emission limits of 70 dB(A)/m² during the day and 60 dB(A)/m² at night. For the directional sectors where immission points 1 to 6 are located, emission limits are 3 dB(A)/m² higher, as specified in the development plan (sound impact assessment report available). Proof of compliance with noise limits at two designated locations, as outlined in the ancillary provisions of the BImSch licence, is available and shows that permissible limits were undercut by at least 6.8 dB(A).

Heating system

The district chimney sweep inspected the heating system on 23 October 2024 in line with Section 14 of the First Ordinance on the Implementation of the Federal Immission Control Act (Ordinance for Small Combustion Systems); no defects were identified. The next inspection is scheduled for October 2026.

Handling of water-polluting substances

Handling of water-polluting and hazardous substances (environmentally relevant materials) at specific points is essential during the production process at Befesa Aluminium Germany GmbH.

As part of our emergency management, all plant components used for storing or handling water-polluting substances are equipped with protective devices to prevent any leakage into the groundwater. This includes constructing floor slabs made of waterproof concrete with additional waterproofing beneath the slabs and foundations in all production and storage areas. Tanks for water-polluting liquids are fitted with suitable drip pans. This WHG liner was professionally installed by a specialist company, tested, and documented with proof dated 1 November 2013.

ENVIRONMENTAL STATEMENT 2025

A company petrol station was put into operation on 22 August 2019. Proper and professional installation, commissioning, and operation prevent soil and groundwater contamination. The installation was carried out by a service provider for the installation of storage, filling and transfer (LAU) systems, inspected and authorised as a specialist company under Section 62 (1) of the AwSV.

Distance from the system to the nearest protected areas:

Designation	Location	Distance to the system
Linear FFH area 257, "Wipper below Wippra", and the protected landscape area "Wippniederung".	Southwest	Approximately 1500m
FFH area 164, "Alluvial forests near Plötzkau"	Southeast	Approximately 2200m

During procurement, particular emphasis is placed on the environmental compatibility and sustainability of the materials. The EHSQ manager records hazardous substances used in the production process in the hazardous substances register.

Safety data sheets are available within the company for the safe handling of water-polluting and hazardous substances (environmentally relevant substances). Procedural and operating instructions for hazardous substances are integrated into the environmental management system.

Employees of Befesa Aluminium Germany GmbH were also instructed in the use of hazardous substances based on developed operating instructions in accordance with Section 14 of the Hazardous Substances Ordinance (GefStoffVO). An accident and emergency management system has been established for unforeseen events. The company has implemented technical protective measures to prevent soil contamination from water-polluting and hazardous substances (environmentally relevant substances).

Soil and groundwater protection

The plant is located in a designated commercial/industrial area in the town of Bernburg.

For the substances used (including various melting salts, diesel fuel, lubricating and hydraulic oils and calcium hydroxide), Annexe 2 of the Federal Soil and Contaminated Sites Ordinance (BBodSchV) does not specify any required actions, tests or precautionary limits. The hazardous substances handled at the aluminium smelting plant are therefore not relevant to soil contamination at the site. However, classifications in accordance with the AwSV have been established and are regularly reviewed and updated as needed!

Specially designed areas are used to store hazardous substances, which are safeguarded against accidental leakage by drip pans or double-walled tanks. Sufficient quantities of oil-binding agents are available. Technical and organisational safety measures have been implemented for hazardous substances.

Rainwater runoff from the roof surfaces and paved areas is directed to the sewer system in accordance with the authorisation.

ENVIRONMENTAL STATEMENT 2025

Occupational health and safety

For Befesa Aluminium Germany GmbH, occupational health and safety matters are as important as environmental protection.

Accidents, near misses, and incidents are recorded, investigated, analysed, and used to implement further protective measures. In this regard, extensive investigations are conducted and additional programmes are implemented to continuously raise awareness among our employees. The goal is zero accidents!

Health and safety are continuously integrated into the procedural and operational instructions of the management system. Occupational safety measures apply not only to the company's own employees but also to others on site. Employees of external companies working for us, as well as visitors, are equally protected and must comply with our safety requirements. More detailed information is available in the safety expert's report.

A comprehensive training and development programme is established, monitored, and regularly carried out. Befesa allocates around €20,000 per year for this purpose, and approximately 1,260 hours of training and development were completed.

Transport and traffic / Transport of hazardous goods

Deliveries and product transportation are carried out solely by lorry on the road. Liquid metal, filter dust, and drilling emulsion are classified as hazardous goods in the outgoing materials. In 2025, there were 2,673 deliveries of liquid metal, 138 of filter dust, and 3 of drilling emulsion.

The main hazardous goods transported as inputs are liquefied gases (nitrogen and oxygen), diesel fuel, and waste classified as AVV 10 03 15*. In 2025, there were 592 deliveries. Of these, 220 deliveries were of waste classified as AVV 10 03 15*.

Monitoring and control tasks are handled by the externally appointed dangerous goods officer, with data documented in the ERP system. The relevant report is available. As in previous years, no incidents were reported in 2025.

Emergency management

We have developed a comprehensive hazard defence and emergency preparation plan, coordinated with the local fire service. This includes regular inspections, fire protection and emergency drills, as well as ongoing coordination with the relevant authorities. We have trained specialist employees, including an internal fire safety officer, fire safety officers, and first aiders, with equipment installed and staff trained at least annually.

Emergency situations are tested in a practical manner regularly, at least once a year. Records of the emergency drills are kept to improve handling of safety and environmental emergencies.

ENVIRONMENTAL STATEMENT 2025

Emergency situations mainly include the following:

- Fires
- Explosions
- Natural gas leaks
- Spillage of products and/or liquid aluminium
- Faults in the extraction filtration system
- Accidents involving injury and/or illness
- Power failures during the melting process
- Pandemics
- Detection of radiation
- Weather-related hazards (heat, cold, hail, storms, heavy rain, snow load, dew, wind, flooding, and extreme weather events linked to climate change)

In the event of a fire, water must not be used as an extinguishing agent, except in the administration area. Along with serious safety hazards, harmful gases such as ammonia may also be released. Sufficient quantities of extinguishing salt are therefore always available on site. Colleagues are regularly trained on this aspect alongside the local fire service and receive appropriate behavioural training. The use of salt also helps prevent soil contamination caused by the absence of liquid.

Due to the spacious layout of the site, the risk of a fire spreading to the neighbourhood or to another plant building is considered very low.

Compliance

A comprehensive legal register is kept. We stay informed about innovations through external consultancy firms, membership in associations, and newsletters. We compare the innovations with our existing requirements and adjust our processes as needed. In addition to our operating licence, the following legal regulations are of central importance to us: BImSchG, ArbSchG, EDL-G, EnEfG, GEG, GefStoffV, GGV, WHG, AwSV, AbwV, KrWG, GewAbfV, IED Directive.

At least once a year, compliance with legal requirements is systematically reviewed both internally and throughout the Group. Any corrective measures are tracked in a central to-do list and given high priority within our company. We are also regularly checked and inspected by the relevant authorities.

ENVIRONMENTAL STATEMENT 2025

Sustainability

Befesa operates with a focus on ecological, economic, and social factors, giving high priority to the three pillars of sustainability.

Befesa closes resource cycles by collecting hazardous waste and residues, recycling them and reintroducing valuable materials back into the production process. Four core principles drive the cycle:

- Reducing the consumption of natural resources
- Recycling hazardous residues from secondary steel and aluminium production
- Recovering recyclable materials from used products using the best available technology
- Reintroducing recovered materials into the cycle.

Sustainability, along with the tightening of environmental and energy regulations, has been a key driver for Befesa in recent years and will continue to be the main growth driver moving forward, as environmental policy challenges increase and the development of climate-neutral industrial production becomes more crucial. In this context, Befesa's business model has proven beneficial for environmental protection and sustainability, while also achieving profitable growth.

Befesa Aluminium Germany GmbH is committed to sustainable development and aims to satisfy all stakeholders through excellent management. Excellence is achieved through continuous investment in innovation, not only by adapting our equipment and processes to the best available technologies but also by contributing to the development of these technologies, ensuring a more sustainable future.

Befesa believes in the circular economy and develops energy-efficient processes that, on the one hand, produce minimal waste, and on the other, reintroduce secondary raw materials into industrial activity, reducing the reliance on non-renewable natural resources. The recycling of scrap from the automotive industry should be specifically highlighted here. Furthermore, sustainable management, leadership in the circular economy, active participation in decarbonisation processes, and minimising the carbon footprint are continually increasing both internal and external responsibilities and requirements.

In addition to intensive training, we also organise health days in collaboration with regional partners.

Health days 2025:

- 8 and 14 January, and 15, 16 and 29 April and 9 May 2025 Addiction prevention
- 21 February 2025 Lung function test

- 3, 5, 9 and 10 September 2025 Metabolic check-up
- 25 November 2025 Short talk: "Mensch ärgere dich nicht"

ENVIRONMENTAL STATEMENT 2025

We are proud to show our social commitment to the region by supporting local organisations and actively taking part in charitable initiatives.

Our many volunteer fire brigade members are released from their duties without delay or bureaucracy. Befesa actively supports these social responsibilities. Support is also provided for the training and development of young firefighters.

In addition, a donation was made to the Salzlandkreis District Youth Fire Brigade in 2025.

A donation was also made to the St Johannis Protestant Youth Welfare Foundation in Bernburg to support the construction of the Bärenhausen Children's Town.

VfL Ilberstedt also received further financial support for organising the "Befesa Cup" for the 7 to 12 age groups.

Through these and other activities, we aim to promote, support, and actively demonstrate our awareness of the importance of the various aspects of comprehensive sustainability.

ENVIRONMENTAL STATEMENT 2025

Input and output overview for 2025

The input-output overview data was compiled in collaboration with the EMB/UMB and the HSEQ manager. The relevant measurement logs, notifications, and invoices were analysed for this purpose. Where direct data was unavailable, the figures were reliably extrapolated.

The result is displayed in the two straightforward input-output tables below. The specific comparative figures and indicators are presented separately in the previous sections.

Input

Input	2023	2024	2025
Raw materials			
Waste acceptance [t]	75,192	69,227	68,357
Granulate, other [t]	21,646	24,373	21,481
Melting salt [t]	8,627	8,308	8,224
Liquefied gases [t]	8,000	8,110	7,187
Other raw, auxiliary, and operating materials [t]	381	350	361
Energy source			
Electricity [kWh]	6,552,724	6,074,654	5,967,447
Gas [kWh]	86,099,499	83,737,252	74,229,763
Diesel [l]	105,281	95,851	90,108
Water [m³]	25,264	37,217	33,363

Output

Output	2023	2024	2025
Products [t]	61,501	62,286	59,748
Waste [t]	43,477	42,621	41,116
Wastewater [m ³]	14,176	29,237	21,819
Airborne emissions [t]	15,192	15,386	14,759

ENVIRONMENTAL STATEMENT 2025

Objectives and programmes

The environmental and energy team develops environmental and energy goals and measures based on corporate guidelines, the ESHQ strategy and key environmental aspects. The works council is involved in this process to ensure workforce participation in the development and formulation of environmental goals. If necessary (e.g., due to changes in production processes or system adjustments), the targets and resulting measures are modified and/or supplemented.

Environmental and energy goals not only contribute to the continual improvement of environmental and energy performance, but also help to secure the company's long-term competitiveness. Internal process descriptions define responsibilities and deadlines. Progress toward achieving the goals is regularly monitored through internal audits and management reviews. The identified economically feasible energy-saving measures have been implemented.

Goal assessment 2025

Goal	Aspect	Measure	Status
Optimisation of furnace stage settings and gas ratio for KTO2	Use of natural gas	Gradual reduction of gas consumption settings for individual furnace stages	✓ Goal met
Reduction of gas consumption at KTO1	Use of natural gas	Conversion to new Nippon burner on KTO1	✓ Goal met
Optimisation of the process-relevant temperature levels at the WHO and LAS/THS	Use of natural gas	Investigation of options for adjusting the heating temperature control on the LAS and THS, and request for quotations for a new temperature measurement method to improve temperature monitoring before casting at the WHO.	✓ Goal met
Investigation of additional consumption in 2024 for the Idex system	Use of natural gas	Comparison of the basic settings and identification of the differences in process operations between 2023 and 2024	✓ Goal met
Reduction of the required compressor pressure	Electricity usage	Gradual reduction of the required compressor pressure and assessment of any impact on the process	✓ Goal met
Development of a concept for measuring and utilising waste heat potential at the exhaust air stack	Use of waste heat potential	Conceptualisation of retrofitting measuring points and evaluation of the most advanced and efficient utilisation options with the best cost-effectiveness	✓ Goal met

ENVIRONMENTAL STATEMENT 2025

Conversion to e-mobility	Emissions	Installation of e-charging facilities for cars and e-bikes	✓ Goal met
Expansion of certification	Organisation Management	Obtaining ASI certification	✓ Goal met

Continuation of the 2025-2027 goal programme

Goal	Aspect	Measure	Responsible entity	Deadline
Creating ecological compensation areas	Biodiversity	Creating a bee meadow through additional sowing and planting extra trees	UMB	2024-2026
Energy-efficient engineering	Energy efficiency of future plants	The impact of energy-related experience and legal changes (e.g. GEG) on the engineering of capacity expansion at the site	Project coordination	2024-2026
Fresh water savings	Water	Testing condensation options for process vapour and returning water to the production plant	Project coordination	2025-2026
Substituting fuels	Emissions	Accompanying the group-wide test procedure for H2-ready burner technology in Valladolid	Project coordination	2024-2026
Increasing the recycling rate of process-related waste	Waste	Solution to the logistical limitation of filter dust utilisation versus disposal	UMB	2024-2026
Improvement of the furnace door clearance monitoring system on all KTOs	Use of natural gas	Review of the adjustment options	EMB/ Project coordination	2026 new
Optimisation of the furnace stage settings and gas ratio at KTO1	Use of natural gas	Gradual reduction of gas consumption settings for individual furnace stages	EMB/ Project coordination	2026 new
Lowering the maximum temperature specification for molten aluminium and investigating potentially better temperature measurement methods at all WHOs	Use of natural gas	Gradually lowering the adjustable maximum temperature specification and investigating the best temperature measurement method	EMB/ Project coordination	2026 new
Optimising the shutdown scenarios for the filter	Electricity usage	Process-controlled shutdown	EMB/ Project coordination	2026 new

ENVIRONMENTAL STATEMENT 2025

system fans under partial-load conditions				
Preparing the project to feed waste heat from the exhaust air stack into the district heating network	Use of waste heat potential	Further preparations with the project partner to ensure prompt implementation	EMB/ Project coordination	2026-2027

ENVIRONMENTAL STATEMENT 2025

The environmental statement for 2026 will be published by our company in spring 2027.

Further information on Befesa Aluminium Germany GmbH and the entire Befesa Group can be found at www.befesa.com, e.g. in the ESG progress report of Befesa AG.

Bernburg, 30 April 2026

.....
Site management

.....
QHSE manager

ENVIRONMENTAL STATEMENT 2025

Declaration of the environmental verifier regarding the verification-validation activities

The undersigned EMAS environmental verifier, Mr Martin Peters, under the registration number DE-V-0362, accredited for the scope 24.42 “Aluminium production and initial processing”, confirms that Befesa Aluminium Germany GmbH, as outlined in this updated environmental statement for 2025, meets all the requirements of Regulation (EC) No. 1221/2009 of 25 November 2009, Commission Regulation (EU) 2017/1505 of 28 August 2017 amending Annexes I, II, and III, and Commission Regulation (EU) 2018/2026 of 19 December 2018 amending Annexe IV, on voluntary participation by organisations in the Community eco-management and audit scheme (EMAS).

By signing this declaration, it is confirmed that

- the assessment and validation were carried out in full accordance with the requirements of Regulation (EC) No 1221/2009, in conjunction with Regulation (EU) 2017/1505 and Regulation (EU) 2018/2026;
- the assessment and validation results show no evidence of non-compliance with the applicable environmental regulations;
- the data and information in the 2025 Environmental Statement of Befesa Aluminium Germany GmbH in Bernburg/Saale give a reliable, credible, and accurate account of all activities at the site within the scope specified in the environmental statement.

This declaration does not constitute EMAS registration. EMAS registration may only be granted by a competent body in accordance with Regulation (EC) No 1221/2009 of 25 November 2009, Commission Regulation (EU) 2017/1505 of 28 August 2017, and Regulation (EU) 2018/2026. This declaration may not be used as an independent basis for public communication.

Based on the reviewed documents, interviews (employee surveys), other information, and a comprehensive site inspection, it is hereby confirmed that

Befesa Aluminium Germany GmbH's
Claude-Breda-Str. 6
D-06406 Bernburg

environmental policy, environmental programme, environmental management system, environmental audit, environmental audit procedure, and 2025 Environmental Statement comply with the requirements of Regulation (EC) No 1221/2009 of the European Parliament and of the Council of 25 November 2009, Regulation (EU) 2017/1505 of 28 August 2017, and Regulation (EU) 2018/2026.

The data and information in the updated environmental statement are reliable, and all relevant aspects of the site have been properly considered. The updated environmental statement will be published in spring 2027.

I hereby declare this updated environmental statement for 2025 to be valid.

Bernburg, 6 May 2026

Martin Peters
Environmental verifier - authorisation number: DE-V-0362